

INADEQUATE TRAY ADHESION

Problem:

- Tray adhesive not used or applied properly.
- The impression material can shrink away from the tray causing distortion that results in a reproduction smaller than the tooth.
- The tray is no longer supportive of the impression material and distortion could result upon pouring.

Solution:

- Use tray adhesive recommended by manufacturer.
- Apply one thin even coat of adhesive to tray covering all areas of contact between tray and impression material.
- Allow 5 minutes to dry.

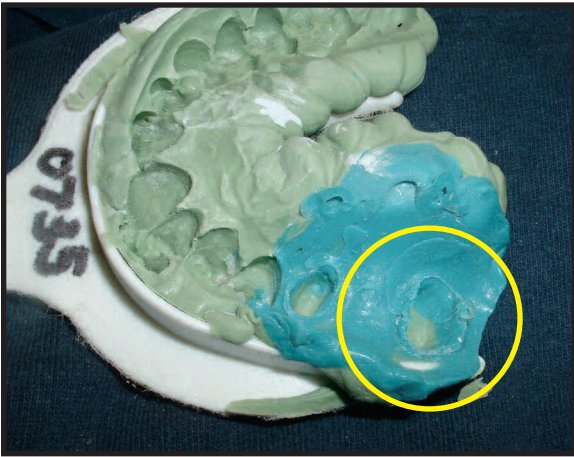
DE-LAMINATION/LACK OF CO-ADAPTATION

Problem:

- Timing of wash and tray materials not synchronized.
- Material not setting.
- Latex contamination.
- Provisional residual from oxygen inhibition layer.
- Blood/saliva/water contamination especially with a two step technique when a spacer is not used.
- Relining of impression with wash material.

Solution:

- Seat Regular Set material within 1 minute 10 seconds and Fast Set material within 35 seconds.
- Use a spacer for Two Step techniques.
- Latex gloves should not touch material.
- Ensure proper isolation.
- Do not use the same impression in a two step technique for the provisional matrix and the final impression.
- Do not reline.



DO NOT RELINE

Relining is not an option as it does not provide proper co-lamination and will distort the impression.