

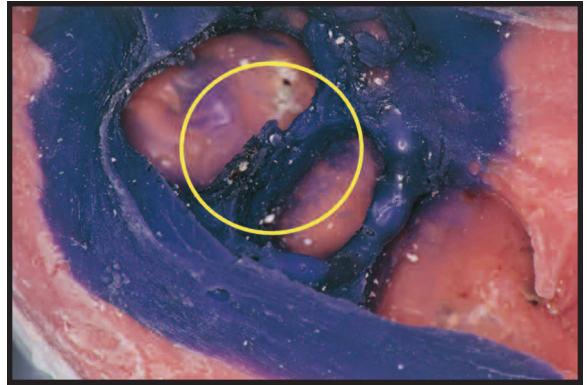
VOIDS & BUBBLES

Problem:

- Improper syringe technique.
- Air incorporated into syringe while loading material into syringe or tray.
- Blood/saliva contamination around preparation.

Solution:

- To prevent “voids”, always “push” the material ahead of the syringe tip as the tip is circled around the prep, and do not pick up the tip around the margin. Keep expressing syringe material while withdrawing syringe tip.
- If using a syringe, load from the front rather than the back.
- Ensure no excess/pooling of moisture.
- Rinse retraction cord thoroughly prior to removal to eliminate sulfur based contaminants from hemostatic agent or glove.



INADEQUATE MARGINS

Problem:

- Insufficient Tissue Management.
- Insufficient wash material.
- Tip not continually submerged within impression material and sulcus.
- Tearing of the margin.
- Exceeding working time of material.
- May require additional tooth preparation for adequate sulcus width.

Solution:

- Ensure good tissue management. At least 0.5 mm apical and 0.5mm laterally. No gingivitis or “pumping” sulcus. Clean field is critical. Double cord may alleviate.
- Keep syringe tip immersed in material and sulcus and push the material 360 degrees around sulcus.
- Use wash material that has higher tear strength properties.
- Seat Regular Set material within 1 minute 10 seconds and Fast Set material within 35 seconds.